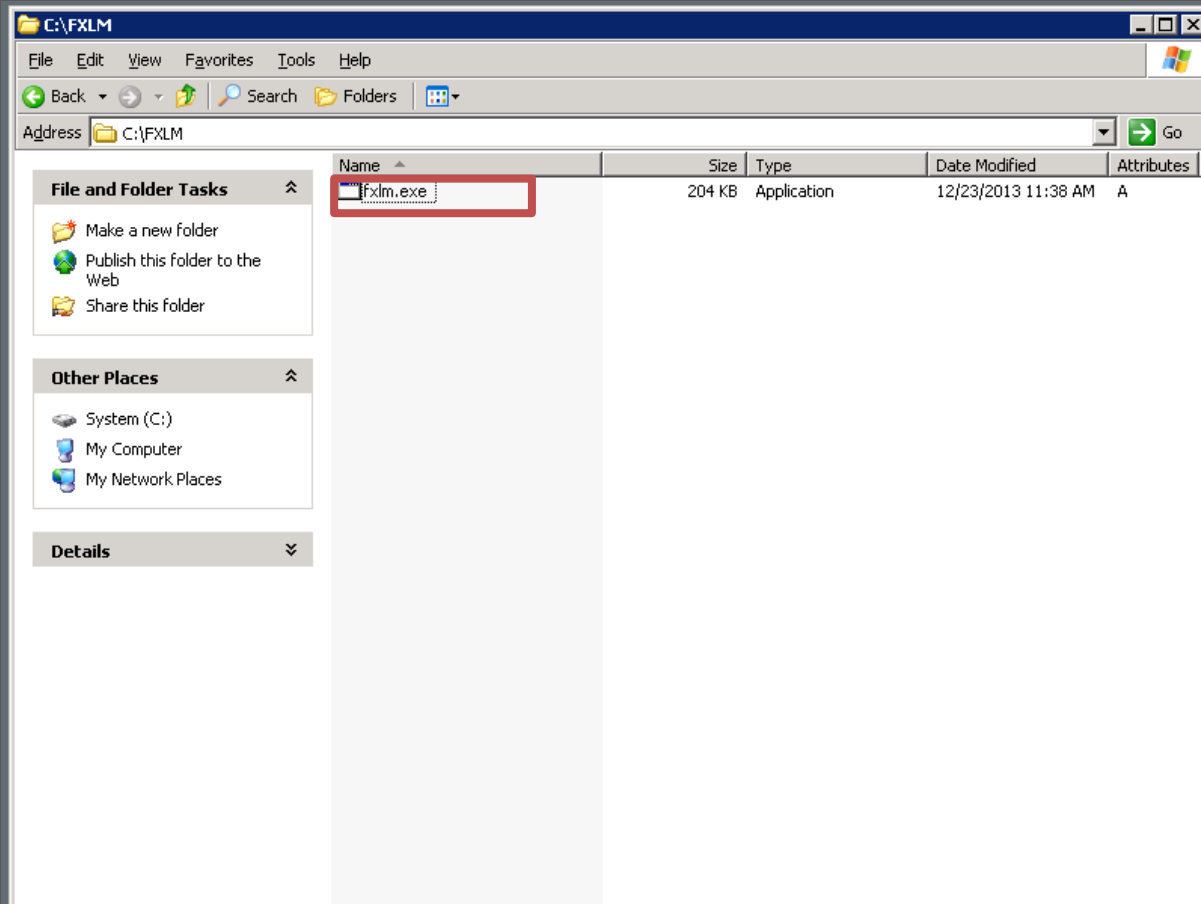
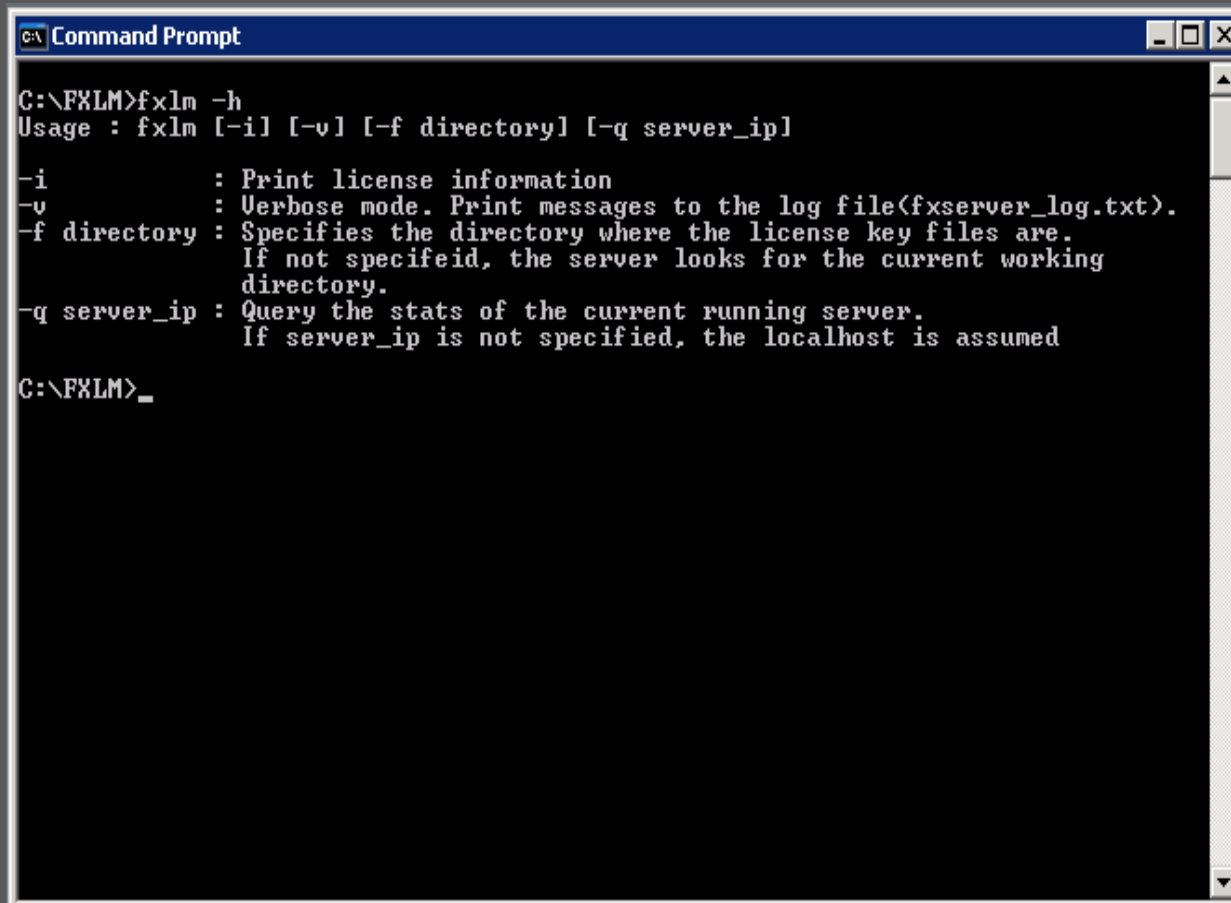


# License Server Program Install



Create folder at local installed driver and copy downloaded fxlm program in that folder.

예) c:\fxlm

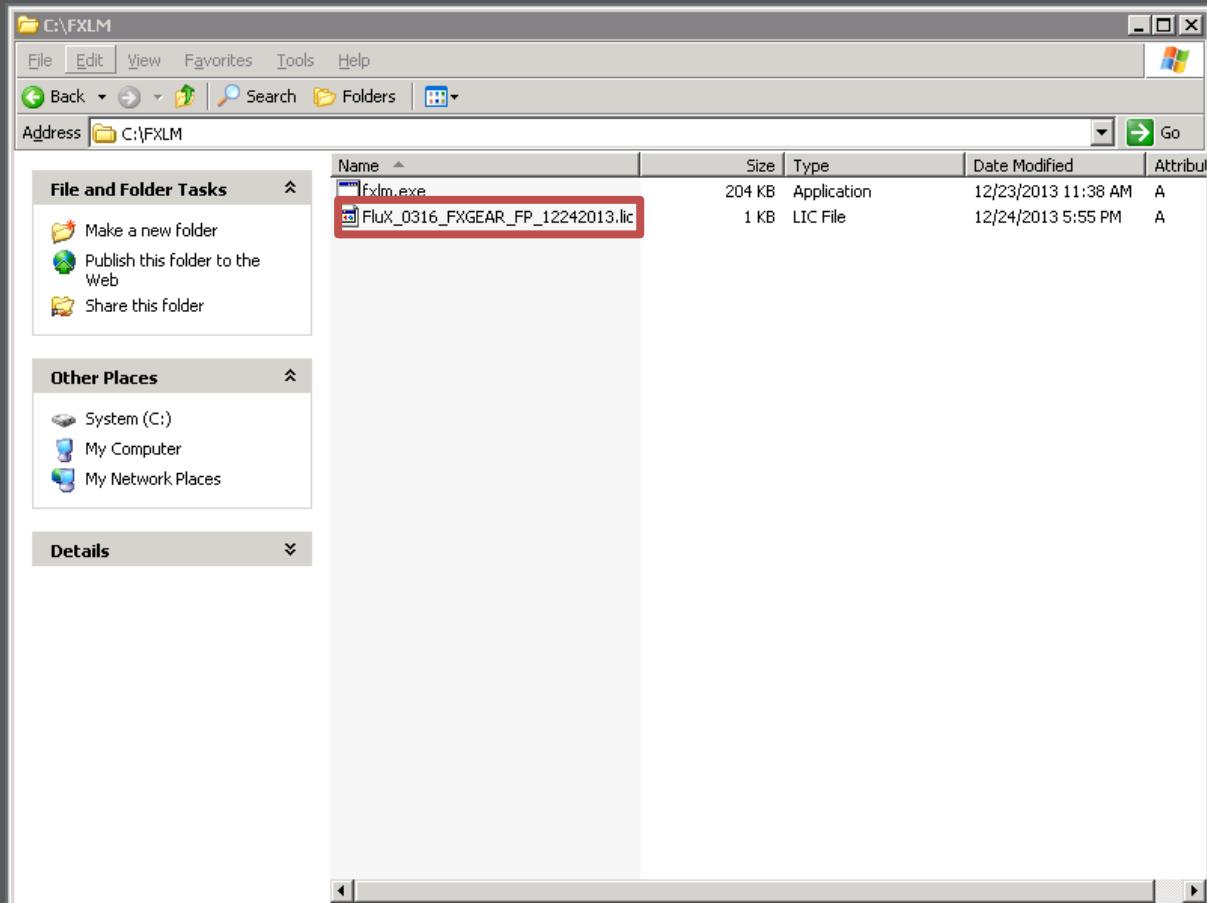


```
C:\FXLM>fxlm -h
Usage : fxlm [-i] [-v] [-f directory] [-q server_ip]

-i          : Print license information
-v          : Verbose mode. Print messages to the log file<fxserver_log.txt>.
-f directory : Specifies the directory where the license key files are.
              If not specifeid, the server looks for the current working
              directory.
-q server_ip : Query the stats of the current running server.
              If server_ip is not specified, the localhost is assumed

C:\FXLM>_
```

Confirm whether the progress at Command Prompt window like the picture above normally works or not.



Copy the issued license file at the folder which fxlm is installed.

```
Administrator: C:\Windows\system32\cmd.exe
C:\fxlm>dir/w
Volume in drive C has no label.
Volume Serial Number is E88E-8DEB

Directory of C:\fxlm

[.]                [..]
FluX_0316_FXGEAR_FP_12242013.lic  fxlm.exe
      2 File(s)                209,024 bytes
      2 Dir(s)  53,535,830,016 bytes free

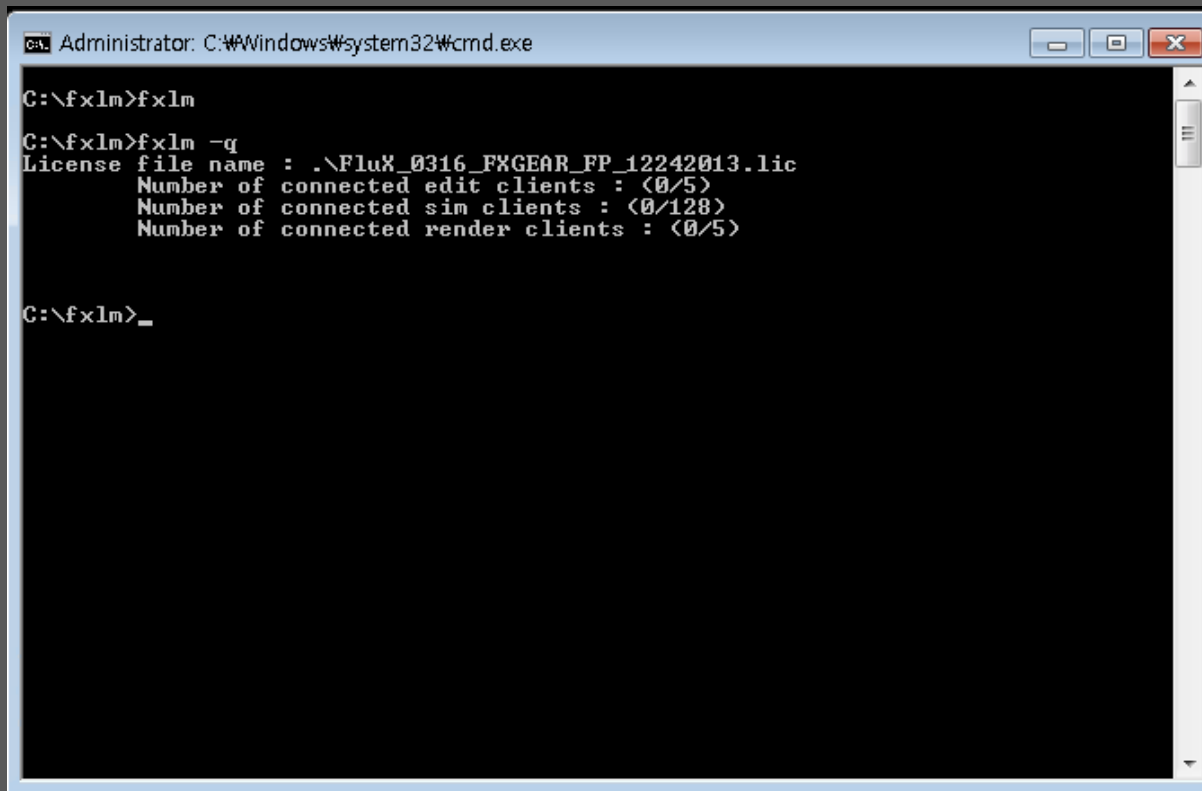
C:\fxlm>fxlm -i
Key file name : .\FluX_0316_FXGEAR_FP_12242013.lic
Product ID : 61444
Version : 316
Edit licenses : 5
Sim licenses : 128
Render licenses : 5

C:\fxlm>_
```

Process at Command Prompt window like below.

```
C:\fxlm>fxlm -i
```

It is ready to process fxlm installation if license file information appears like the picture above.



```
Administrator: C:\Windows\system32\cmd.exe
C:\fxlm>fxlm
C:\fxlm>fxlm -q
License file name : .\FluX_0316_FXGEAR_FP_12242013.lic
Number of connected edit clients : <0/5>
Number of connected sim clients : <0/128>
Number of connected render clients : <0/5>

C:\fxlm>_
```

@Process license manager

```
C:\fxlm>fxlm
```

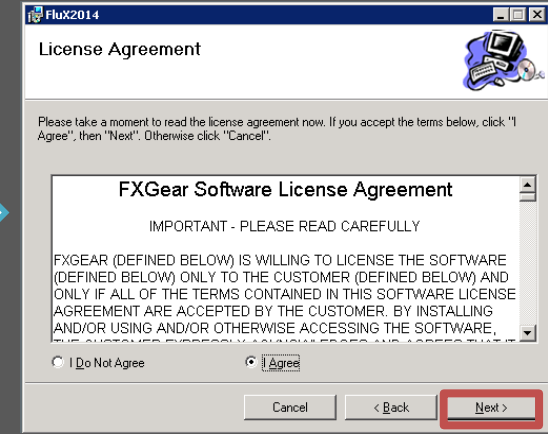
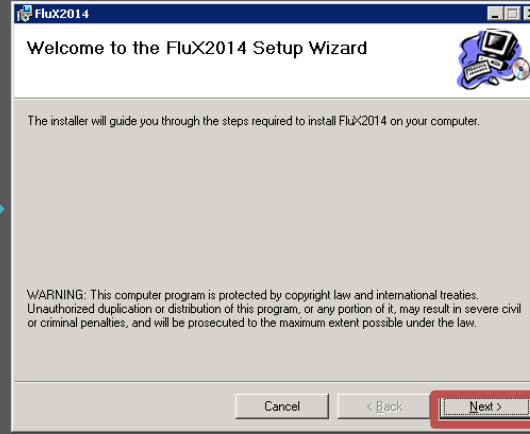
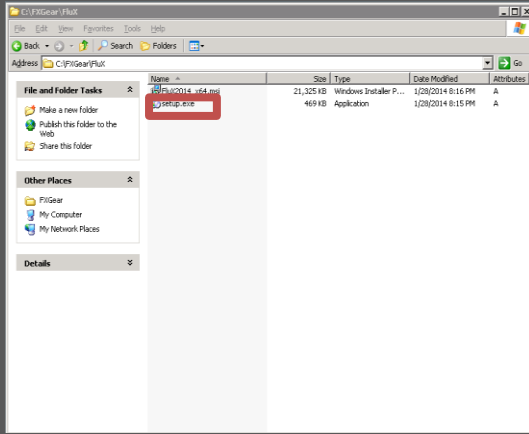
@Check license manager progress and status

```
C:\fxlm>fxlm -q
```

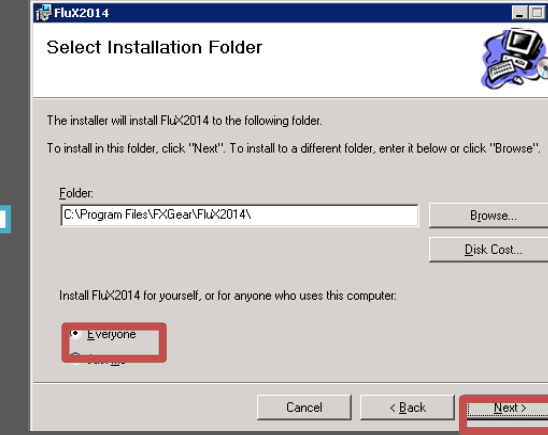
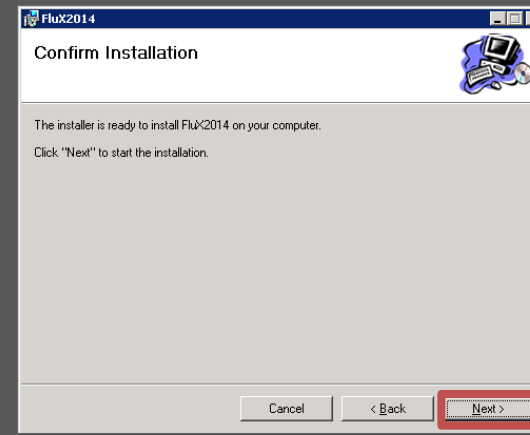
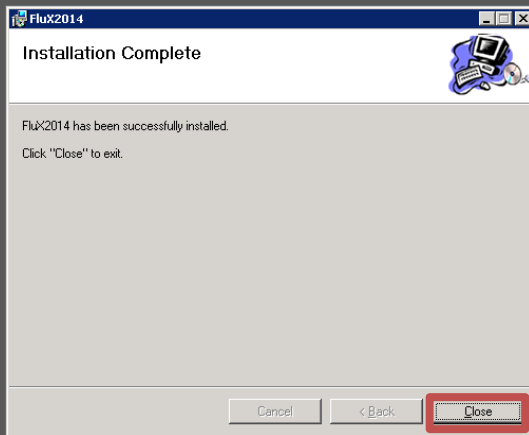
It is normally progressing when processing information of fxlm is appeared.

Confirm whether received license and fxlm information are matched and if you have a problem, please send email to [support@Qualoth.com](mailto:support@Qualoth.com) with relevant contents.

# Client Program Install

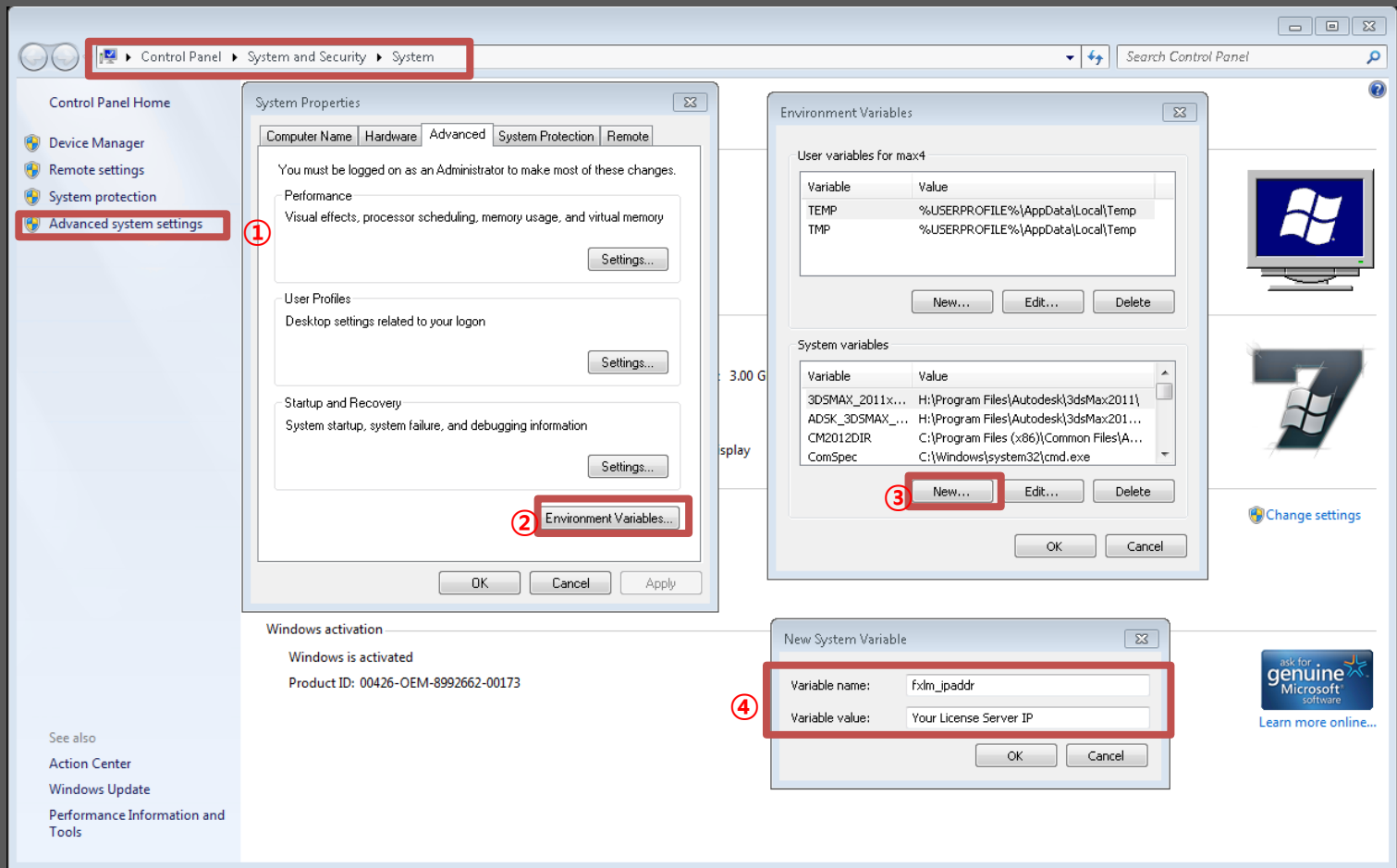


Process FluX install file by double-clicking.  
(Flux supports 64bit OS)



Choose 'Everyone' at processing authority.  
(If you choose 'Just me', you might not be able to process with other account)





## Server Information add to Enviroment Variables

Register License Server information at Environment Variables like the picture above.  
Flux is not worked if license server information is not entered. (Error Numer -2 occured)

```
C:\Program Files\WFXGear\Flux2014\bin\Flux_x64.exe
*License : license server ip address : 192.168.78.238
*License : license acquisition succeeded.
at All Node to Dirty

-- Update Current Frame --
Update Frame: 1, Time: 0.0416667
Elapsed Time: 0
```

Processed Flux through verified License Server

The screenshot displays the Flux\_x64 software interface. At the top, a menu bar includes File, Edit, View, and Help. Below it is a toolbar with various icons. The main workspace is divided into several panels:

- Node Graph Editor:** Located on the left, it shows a 'Camera' node.
- 3D Viewport:** The central area shows a 3D scene with a yellow wireframe box and a grid floor.
- Node Property Window:** On the right, it displays settings for a 'Global' node, including parameters like CurrentFrame (1), NextFrame (2), PrevFrame (0), DT (0.0416667), CurrentTime (0.0416667), CFL (1.5), FrameRate (24), CellSize (0.1), DomainOrigin (0, 0, 0), Resolution (32, 32, 32), SubdomainDimension (1, 1, 1), StartFrame (1), EndFrame (120), ProjectRoot, CaptureFileFormat, and CaptureSave (Off).
- Server Setting Window:** At the bottom left, it shows 'Local Mode' selected, 'Multi Mode' unselected, and 'Num Cores' set to 16 (X: 4, Y: 1, Z: 4). It has 'Start' and 'Stop' buttons, a checked 'Auto Read' checkbox, and a 'Compose Images' button.
- Command/Script Window:** At the bottom center, it shows a 'Python1.py' script and a 'Ready' status.

At the bottom of the interface is a timeline with a 'Command Line' input field and a 'Command/Script Window' output area.

```
C:\Program Files\FXGear\Flux2014\bin\Flux_x64.exe
FXLicense : Environment variable FXLM_IPADDR is not set.
FXLicense : fxml_ipaddr.txt is NOT found, trying localhost for license server :
FXLicense : license acquisition succeeded.
Set All Node to Dirty
-- Update Current Frame --
Update Frame: 1, Time: 0.0416667
Elapsed Time: 0.015
```

Processed Flux as Demaware

The screenshot displays the Flux\_x64 software interface. The main window features a 3D viewport with a yellow wireframe box and a camera view. The interface includes several panels: a Node Graph Editor, a Node Property Window (Global settings), a Server Setting Window (Local Mode, Num Cores: 16, X: 4, Y: 1, Z: 4), and a Command/Script Window. The Command Line at the bottom shows the current frame as 1 and time as 0.0416667. The Node Property Window shows settings for Global, including CurrentFrame (1), NextFrame (2), PrevFrame (0), DT (0.0416667), CurrentTime (0.0416667), CFL (1.5), FrameRate (24), CellSize (0.1), DomainOrigin (0, 0, 0), Resolution (32, 32, 32), SubdomainDimension (1, 1, 1), StartFrame (1), EndFrame (120), ProjectRoot (%FLUX\_HOME%/default), CaptureFileFormat (%FLUX\_HOME%/default/SnapShot/default:%04d:%04d.Fxd), and CaptureSave (Off).